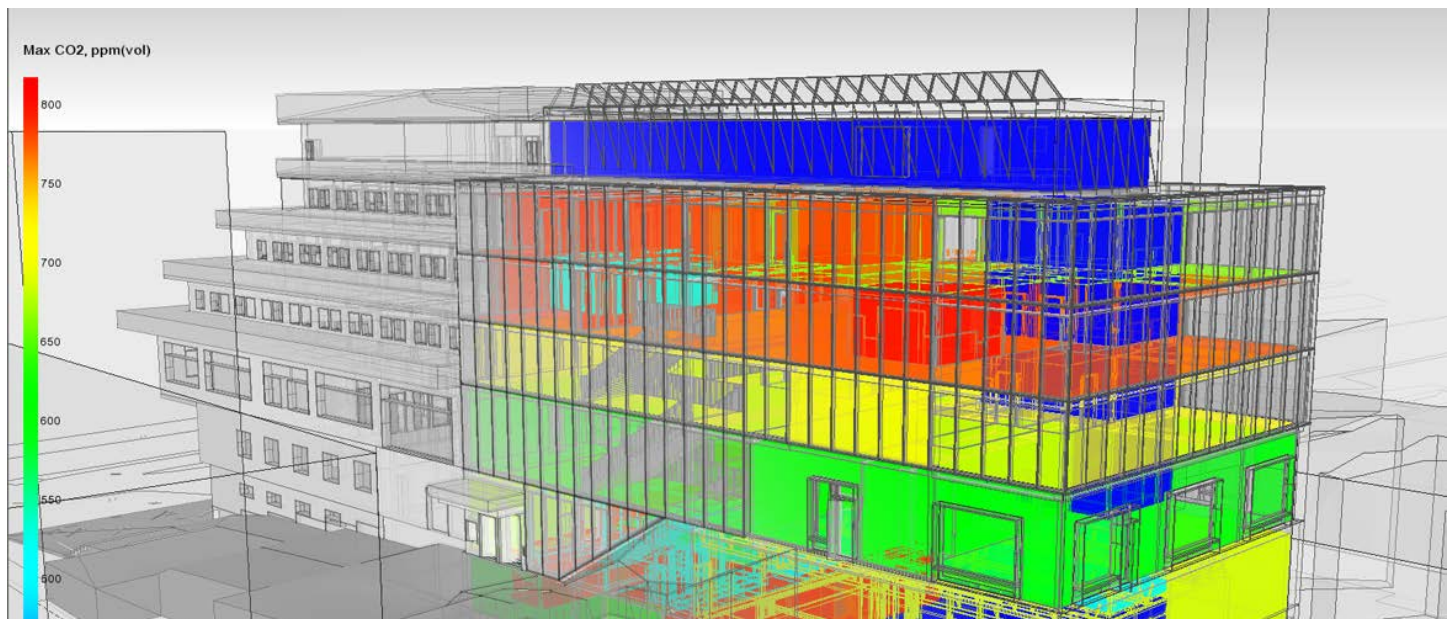


### **Brief description:**

*To improve the indoor climate and energy performance of buildings dedicated decision making tools are needed. For that purpose, various tools are being developed to help building designers/owners/clients to decide what levels to reach for in the performance of their building, to check the performance in terms of energy, comfort and expected costs. This workshop tries to give an overview of what is available and which latest developments have been made in the field of advanced building performance simulation for adaptive and interactive buildings. In the workshop*

- *some research results from Building performance simulation case studies and*
- *building validation feedback as well as*
- *future challenges for district and urban level performance simulations*

*are discussed.*



### **Moderators and speakers:**

*Mika Vuolle, EQUA, IBPSA-Nordic (vice president)*

*Dr. Matthias Haase, IBPSA-Nordic (secretary)*

**Workshop organizer/contact person:** *Dr. Matthias Haase, SINTEF Building and Infrastructure*

### **Practical tips**

- Duration of all workshops is 90 min.
- The workshop has 2 moderators who introduce speakers and lead prepared discussion.
- Speakers could provide 2-3 introductions, each about 10 minutes. The rest time is used for discussion and conclusions.
- Moderators will prepare statements and questions (slides to have fruitful discussion).
- At the end, the moderators will summarize based on discussion results and consensus.
- Speakers and participants must register to the conference